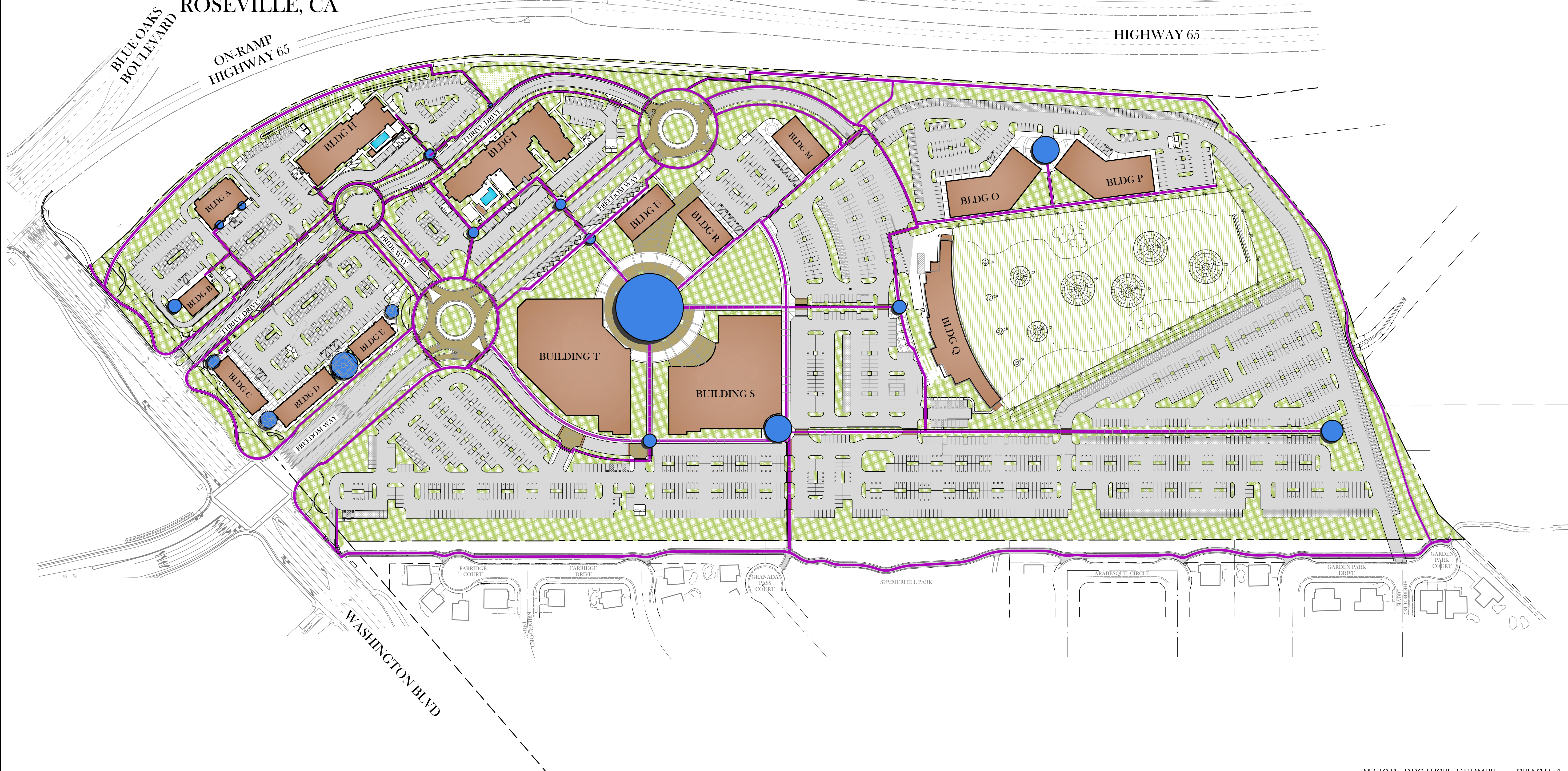


MODIFIED - PRELIMINARY PEDESTRIAN PLAN

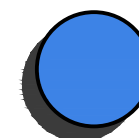


NCRSP - PARCEL 49

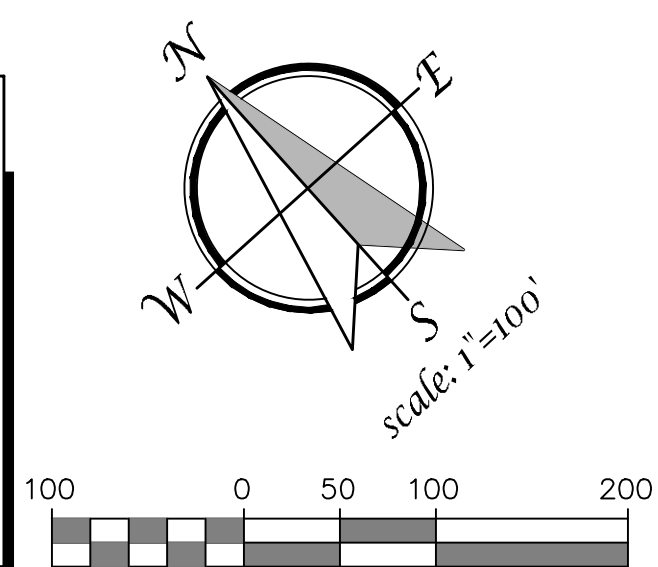
MAJOR PROJECT PERMIT - STAGE 1

ROSEVILLE, CA



**NCRSP - PARCEL 49
PEDESTRIAN LEGEND**

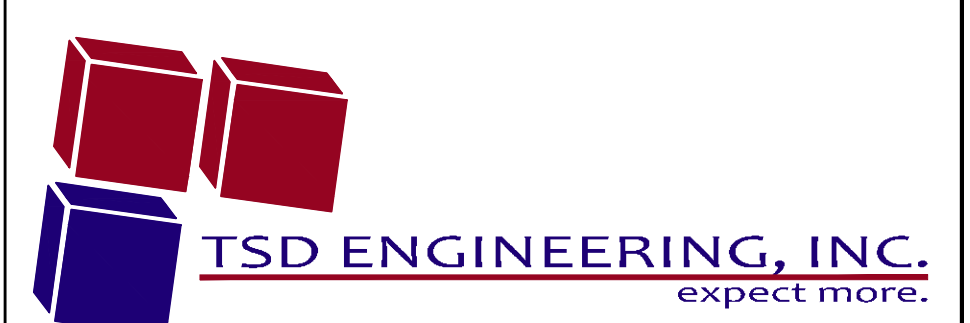
-  PEDESTRIAN GATHERING SPACES
-  PEDESTRIAN PATHWAYS
-  LANDSCAPE AREAS



Scale: 1"=100'

100 0 50 100 200

MAJOR PROJECT PERMIT - STAGE 1
PRELIMINARY PEDESTRIAN PLAN
JUNE 01, 2017



TSD ENGINEERING, INC.
expect more.

31 Natoma Street, Suite #160
Folsom, CA 95630
Phone: (916) 608-0707
Fax: (916) 608-0701